

The Wintringham



wagtail

The Wintringham Newsletter

Issue 7: Winter 2024



Community celebrates Christmas



**David Lloyd Leisure plans
for new Club**

**Helping hedgehogs
this winter**

**Introducing smart
journeys**

Contents

Pages 4–5

Around Wintringham: Phase 1

Pages 6–7

District Centre update /
David Lloyd Leisure

Pages 8–9

Estate management:
Taking care of Wintringham

Pages 10–11

Sustainable water management
Water: a precious resource

Pages 12–13

An update from our local partners

Pages 14

Wintringham Residents'
Association update

Pages 15–17

Events and activities

Pages 18 – 19

Hedgehog focus

Pages 20–21

Introducing smart journeys

Pages 22–23

Investing in St Neots Town Centre

Sign up to receive news,
information and updates
at wintringham.org



Welcome

Welcome to the latest issue of our resident newsletter – the Wintringham Wagtail – with all our latest development and community news, as well as insights from our Residents' Association and partners.

With the leaves changing colour and the weather getting colder, Tracey – Estate Manager for Encore – provides an overview of what the team will be up to over the next few months to keep the shared spaces and amenities in tip top condition.

We had lots of positive feedback from the Wild Wintringham event with the Wildlife Trust in October and, as well as feedback on the event, we've included information about how to support hedgehogs through the colder months.

There's been lots of great events and activities and the Wintringham Residents' Association continues to do a fantastic job bringing the community together. From sport, wellness and food to culture and heritage there has been something for everyone to enjoy. Don't forget to put the Lunar New Year events on the calendar, and we'll look forward to seeing you there!

In the meantime, we hope you continue to enjoy Hemingford Bakes drinks and homemade goodies and our Friday evening food truck. Keep an eye on Off the Beaten Truck's social media for updates during the festive period.

There's also lots going on at St Neots and Councillor Ben Pitt shared some of the exciting news about plans for the town. This includes over £15m investment in the Priory Centre, High Street, Market Square and Old Falcon Hotel.

You may be aware that Urban&Civic acquired L&Q Estates in the summer and will be taking on the role of master developer for the second phase of Love's Farm. The development already has planning permission and work is underway to prepare the ground for the new homes that will be coming forward. This will not have an impact on the development of Wintringham, which continues to progress as planned.

We hope you find this issue of The Wintringham Wagtail interesting and informative. If you have any queries about the Wintringham development or suggestions for future editions, please let me know.

With best wishes

Christine

christine.littlewood@urbanandcivic.com
T 07384 816725



Phase 1

This map helps show the planned delivery within the first phase of Wintringham. This includes the areas each housebuilder is working in, the public realm and community spaces, and how it all comes together.



Future District Centre

Wintringham's first local hub will bring together some key facilities and spaces. It will come forward in three phases, with the northern area including a large food store, a café/restaurant, and space for smaller shops and offices. In the commercial area to the south, plans have been submitted for a new David Lloyd Leisure Club (see page 7).

The middle section of the District Centre will follow on from these areas, providing a civic heart to the hub with a health centre, nursery, library and community centre as well as a public square for community gatherings.

First homes to forever homes

There are a wide range of stylish apartments and houses available for anyone looking to make Wintringham their home. More information is available from the show homes and online at www.wintringham.org/homes



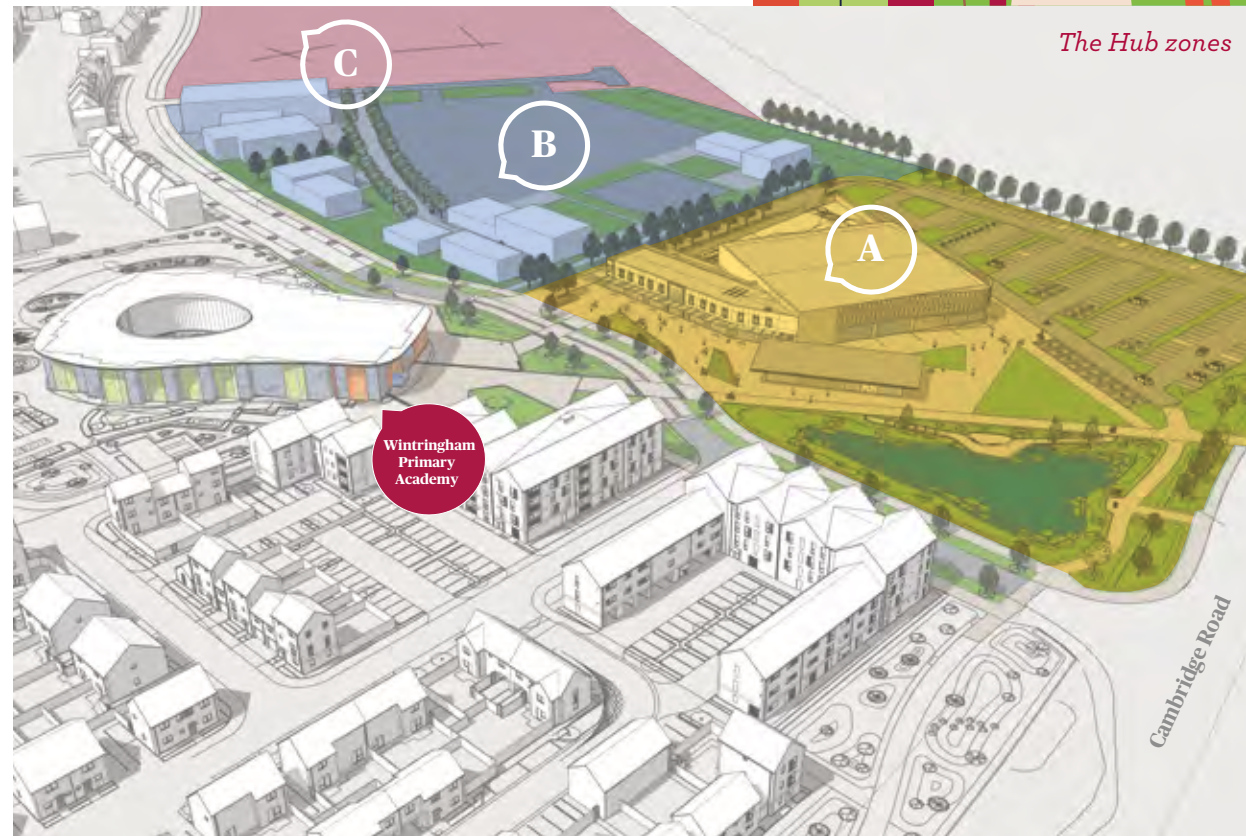
District Centre update

The team continue to work hard to bring forward the development's main centre for amenities and facilities, which will be called The Hub at Wintringham.

The area will be delivered in three phases as the designs and operators are finalised, planning consent is secured and they are delivered. The whole area is due to start in early 2025 and take five to six years to complete.

As detailed in the last edition of the Wagtail, The Hub at Wintringham is divided into three zones:

- **Zone A** – food store, retail/commercial units, office/co-working space and a café/eatery
- **Zone B** – nursery, health centre, community centre and library
- **Zone C** – commercial area with David Lloyd Leisure (subject to planning consent)



The Hub zones



David Lloyd Leisure submits plans for new Club

David Lloyd Leisure has submitted plans for a new health, fitness and wellness club in Zone C of Wintringham's District Centre to Huntingdonshire District Council. The plans for the family-friendly club include a state-of-the-art gym, heated indoor and outdoor swimming pools, exercise studios, soft play, racquet sport facilities and a spa.

David Lloyd Leisure is passionate about making its Clubs a comfortable and welcoming place for members to come together with friends and family to promote physical and mental health and wellness.

The plans will also feature a Clubroom for members to meet with friends or enjoy a bite to eat, as well as large and inviting spaces to work, relax and socialise. Family sits at the heart of David Lloyd Clubs and plans also include a range of facilities for children including a soft play, and spaces for after-school and holiday clubs, offering fun and active childcare solutions for parents outside of school hours.

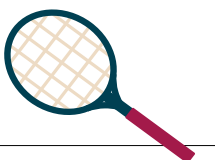
In addition to match-quality tennis, pickleball and badminton courts, the Club will offer the latest racquet sport to take the UK by storm – padel. The Premium Club will also feature a luxury Spa Retreat with Spa Garden.

Stuart Caswell, New Clubs Acquisition Director at David Lloyd Leisure said: "We are delighted to be part of the future for Wintringham. Our plan is to construct a state-of-the-art health and wellness Club that not only enhances the area and creates a range of new jobs and opportunities for the local community, but also reflects the needs of people living in the area."

David Lloyd Leisure has made a commitment to become carbon neutral by 2030 and the new Club will incorporate the latest in sustainability technology to ensure it operates as efficiently as possible.

Subject to planning consent, the new Club could be open in late 2025 and will create around 60 local jobs during construction and 90 jobs once open.

www.davidlloyd.co.uk



Estate management: Taking care of Wintringham

A warm hello to the Wintringham community from all of us at Encore. My name is Tracey Davis and I'm your Estate Manager. If we haven't had the opportunity to meet yet, I regularly carry out inspections at Wintringham and attend Community Association meetings.

I wanted to tell you a bit about Encore and how we'll be taking care of Wintringham over the autumn and winter months.



Encore specialises in looking after community amenities and finances, and has been appointed to look after the estate management for Wintringham. We arrange the maintenance of Wintringham's shared spaces, systems and amenities. This includes play parks, landscaped areas, open green spaces and sustainable drainage systems (SuDS).

There's a lot involved in making sure your community spaces are well looked after. For Encore, that includes planning and scheduling maintenance work, managing specialist contractors, taking care of health and safety compliance, and arranging insurances.

We also look after financial management; working closely with Urban&Civic to agree the budget for the maintenance required in the coming year and supporting the collection of estate maintenance charges (also known as service charges).

With the arrival of autumn and the cooler weather creeping in, we've been busy working with contractors to make sure Wintringham is ready for the seasonal changes. The following is just an outline, but not an exhaustive list, of the work we will be completing or overseeing. We hope it provides a useful overview of some of our seasonal estate maintenance activities.

In the coming weeks, we will continue to monitor how the landscaped and green areas are growing. For instance, if the weather is warmer, contractors may still be cutting the grass. Or more work may be needed to keep paths and drainage systems clear as leaves fall, especially in windy weather.

With the soil still warm, but the weather now wetter, it's an ideal time to be planting trees and shrubs. We are working closely with Urban&Civic and have identified

where replacement planting is needed following a recent tree survey. The works, which will be completed before the spring, will include the replacement of approximately 600 plants across the development.

Play parks will still be a popular spot in Wintringham if the sun is shining, so these will continue to be inspected and maintained too.

As the weather changes, hard surfaces – such as footpaths and roads – will be taken care of. This could also mean making sure they're clear of debris or gritted when frosts set in. Where lighting is part of the managed areas, we'll make sure all lights are working as expected as the nights get longer.

Together with all those in the community, Encore is committed to taking the greatest care of everything that makes Wintringham an exceptional place to be.

As we continue through autumn to winter Encore, and the specialist contractors we work with, will be adapting and making sure your communal spaces remain safe, accessible and pleasant.

If you have any queries, or would like to report any maintenance issues, please do get in touch with us using the Places app, or email: info@encoregroup.co.uk



ENCORE!

For up-to-date news, please download our app, 'Places' for Wintringham residents. It's the quickest and easiest way to get in touch with us. It's also where you'll find information about communal spaces and amenities as well as estate management arrangements.

You'll need to register when you download the App. Your 'Invitation key' is included in your welcome letter from Encore when you

move into your new home at Wintringham. Our legal team liaises closely with the different firms of solicitors to ensure we receive completion information as quickly as possible. Meanwhile, to help you get access to the app, you can fill out the form here:

www.encoreestates.co.uk/help/places.html



Sustainable water management

All new developments need a plan to manage the surface water that comes from rainfall, and with the potential for more extreme effects of climate change, this includes planning for extreme weather scenarios such as a 1-in-100-year storm, flood or rainfall event.

SUSTAINABLE DRAINAGE SYSTEMS

Wintringham lies within the catchment of the River Great Ouse and is intersected by Wintringham Brook and the Hen Brook, flowing east to west from the eastern side of the A428. These features are the foundation of Wintringham's sustainable drainage system (SuDS), which is used to manage surface water: not just to support climate resilience for the new community at Wintringham, but to play our part in the wider drive to make St Neots more resilient to flooding.

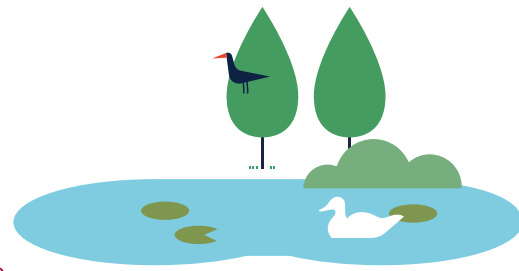
SuDS at Wintringham draw on nature to manage rainfall close to where it falls. Before any development took place, rainwater would run straight off the surface or infiltrate through the ground and run to its nearest watercourse. Now a range of carefully sized and designed ponds act as storage systems, filling up during periods of rainfall, holding water back and gradually emptying following storm events to ensure the wider water network can cope, ideally without flooding beyond the areas designated for this along the Ouse.

These ponds, along with connecting brooks, swales (shallow channels that collect water), ditches and drains form the main SuDS features at Wintringham.

The largest ponds – known as Wintringham Waters – sit at the south of the first phase of the development and will be fully opened up for access in the Spring, providing walks around the waters and bird hides to sit and watch the different species making this area their home.

These ponds alone provide around 61,000 cubic metres of surface water storage volume capacity and have been designed to withstand storm durations from 15 minutes through to 180 hours of rainfall.

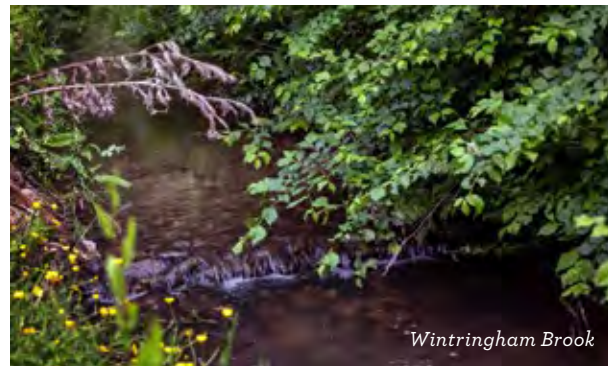
Not only does the approach mimic natural solutions, but it also has positive environmental benefits. As the surface water passes through the system of swales across specially planted vegetation it is cleaned, and the quality of the water is improved. They also create habitats for wildlife and



enhance biodiversity. Enhancements to the brook corridors will benefit a range of local species such as water voles, otters, birds, bats, grass snakes and aquatic invertebrates.

CREATING CULVERTS

Two culverts have been installed to ensure the brook continues to flow safely underneath the new roads and cycleways going in to connect the first and second phase of Wintringham. As well as enabling the water in the brook to flow effectively, integrated mammal shelves provide safe passage for wildlife and small mammals underneath the road. Planting around the entrance and exit also provides cover and protection for wildlife using this corridor.



Wintringham Brook



CGI of the new culverts at Wintringham

The story behind water



EVERY DROP GOES THROUGH A LOT

From that first morning cuppa to a relaxing shower at the end of the day and everything in between, life revolves around water.

Most of us don't think about where our water comes from, but since only 1% of the world's water is drinkable, every drop goes through a lot before getting to you.

Water starts its journey as rainfall. Anglian Water borrow it from the environment and collect it from different sources including reservoirs like Grafham Water, as well as rivers and even deep underground. Anglian Water then filter, treat and carry out thousands of tests every day, to bring you safe, clean drinking water, ready for you to turn on the tap.

As we live in the driest region in the UK, with a growing population, it's important to monitor our water resources closely, to keep taps flowing and toilets flushing now and long into the future.

That's why it's important to save and protect every drop.

Top tips to save water at home...

46% of people think their household uses under 20 litres a day. The average person uses 136 litres of water a day!

- Showering for just one minute less can save over 28,000 litres: that's over £100 in energy and water bills every year.
- Turning off your tap while brushing your teeth or washing your face can save over 2 full buckets of water per day.
- Waiting to put the washing on until you have a full load could save around 10 litres of water every wash.

To find out more about the story of water, meet the teams that keep your taps flowing and explore how you can help love every drop, please visit:

www.anglianwater.co.uk/storybehindwater



KEEPING THE SEWERS CLEAR

After flushing the toilet or rinsing the dishes, Anglian Water take away wastewater through thousands of kilometres of sewer pipes, so it can be treated, cleaned and recycled back to nature.

Blockages in the pipes are the most common cause of sewer flooding in homes and communities. In our region, the teams at Anglian Water clear one sewer blockage every 15 minutes, but 80% are easily avoidable.

Did you know:

- The amount of rubbish like used wipes, nappies, period products and more, that are removed from the sewers each year, would stack up to be almost as high as Mount Everest!

You can help keep the sewer pipes clear, prevent bad smells and reduce the risk of sewer flooding in your home by making a couple of small swaps.

By just binning your cooking fats, oils and grease and only flushing the 3 Ps (Pee, Poo and Paper), you can save money on unwanted plumbing bills, protect your pipes and homes.

Explore more tips to keep your pipes clear and how Anglian Water are protecting the sewers, environment and communities at:

www.anglianwater.co.uk/keeping-the-sewers-clear

CONTACT ANGLIAN WATER

You can check for ongoing work in your area or report an issue on the website at: www.anglianwater.co.uk/check



An update from our local partners

Councillor Richard Slade Mayor of St Neots and Councillor for St Neots Priory Park & Little Paxton

richard.slade@stneots-tc.gov.uk

I've thoroughly enjoyed my first six months as Mayor!

I was delighted to be invited to the British citizenship ceremony at the County Council offices in Alconbury Weald. The ceremony is the last stage for foreign nationals in the British citizenship process and is a very formal event where delegates swear an oath. Each week the ceremony welcomes citizens from across the world and for this one, we had over 30 people from 15 different countries. It was a joy to socialise afterwards in the café and hear their stories.

I joined St Neots Mancave, who had a busy afternoon where 'cavers' celebrated their second anniversary alongside receiving a much-needed donation of £2,500 from Taylor Woodrow to help them continue to run their excellent service.

The mayoress and I were invited to attend the Little Gransden Air Show. It was our first time at the show, and we had a wonderful afternoon watching the brave pilots battle 40mph wind speeds to perform their aerial acrobatics. The single-engine bi-planes struggled but it meant you could get a good look as they flew past.



I'm a big fan of cutting ribbons so I was delighted to open three separate sites — the inclusive play equipment at Brickhills, Moore's Walk Garden on the High Street and the refurbished games room at the Chaii Hub.

I also attended the annual Living History Festival organised by the St Neots Museum and was pleased to see so many reenactors and stalls squeezed in. I was fascinated by the in-depth knowledge of each character from their chosen period. My highlight was a conversation with Charles II and Catherine of Braganza; they never once slipped out of character.

I was secretly invited to the medieval palace of Buckden Towers where the Shakespeare at the George team revealed it as their new venue. It will be an amazing backdrop to their first performance next summer. My advice, get your tickets early for Twelfth Night once they go live!

The Mayor's Charity Golf Day was a huge success. We had a bit of thunder and one heavy shower, but this didn't dampen the spirits or the skill of the 84 golfers from 21 teams who competed for first place. Over £100,000 has been raised for local charities since we started this event in the 1990s and we were delighted to be supported by St Mary's Rotary Club this year.

The mayoress and I also attended a lovely musical theatre event in Love's Farm hosted by Backstage Cabaret and a private view at the Museum of work by local illustrator Stacie Swift, as well as judging the fancy dress at the Scarecrow Festival in Great Paxton. Alongside this, and in my district councillor role, I was asked to be a judge at Little Paxton Flower Show.

Six months into my role as mayor and I can honestly say I'm thoroughly enjoying it. I get to meet so many lovely residents, businesses and visitors, and the support I get from my fellow councillors as well as the mayoress is very humbling.



Scott Jenner Chair of Wintringham Residents' Association

info@ourwintringham.org.uk

Hello. Firstly I'd like to take this opportunity to wish you all a very Merry Christmas and a wonderful New Year at Wintringham. I'm Scott, the Chair of the Wintringham Residents' Association (WRA). I moved to the Morris Homes side of Wintringham almost three years ago with my partner and our dog. Moving away from friends and family back in Hertfordshire, it was really important for me to build great connections with my immediate neighbours, and I've been so privileged to have built amazing friendships with many of them.

I joined the Residents' Association shortly after moving to Wintringham with a clear aim of helping build a connected, safe and inclusive community for all my neighbours. One where you say hello in passing.

I became Chair of WRA in October last year and since then I've been busy working with the rest of the team to create and lead neighbourhood events reflective of our wonderful community.

We've had some great events this year and I hope you enjoyed the hands on experience with the owls and our Diwali event this autumn. It was fantastic to see so many of you!

Urban&Civic also held its annual Christmas event on the plaza, which is always a highlight of my year!

And lastly, we are already planning our Lunar New Year celebration, which promises to be our biggest yet - this one will be very special!

If you are new here, congrats you've moved into a wonderful community - and here's to many happy years in your new home at Wintringham. Your neighbours will also have moved here recently. So go on, take the leap and introduce yourself!

If you see me around - I'll normally be walking my dog - do say hello! If you'd like to get involved with the WRA or have any questions, please reach out by emailing info@ourwintringham.org.uk

Tracy Bryden Headteacher of Wintringham Primary Academy

head@wintringham.cambs.sch.uk



Wintringham has continued to grow this year, and we now have 60 children attending our Pre-school with more children due to join us in January. There are now 223 children attending the main school with a further six children in our social, emotional and mental health needs (SEMH) setting, known as The Lighthouse. In September we opened an additional Reception and Year 1 class. It is wonderful how quickly we are growing and how easily the new children are settling into life at Wintringham Primary Academy.

The children in KS1 started the term with a visit from History Off The Page where they learnt all about life in a Medieval castle, and Years 3 and 4 learnt all about Ancient Egypt. All the children dressed up and enjoyed all the different activities from that period of history.

You may have seen the children in Years 5 and 6 around Wintringham as they completed their Bikeability training at the start of the term. I feel that this is such a valuable skill for them to learn and was very impressed by them all.

The children in our Pre-school have been busy enjoying outdoor learning both in the school grove and around the playground and field. They also made pictures of dragon's fire from all the multicoloured leaves they found.

I am really looking forward to all the exciting activities we have planned in the run up to Christmas, particularly our Reception and KS1 performances, which are always wonderful to watch. To find out more, visit:

www.wintringhamprimary.co.uk

NEW PARKING RESTRICTIONS

Following concerns about safety, Smart Parking is carrying out a survey to inform parking restrictions planned on Nuffield Road, which are due to come into effect early in the new year.

Signs will go up along the affected stretch of road and parents/carers dropping children off by car should use the school car park at Aspen Avenue, off Bret Road.

Wintringham Residents' Association update

The Wintringham Residents' Association (WRA) is formed of residents just like you who graciously volunteer whatever time they can spare from their busy lives to help with activities to support the betterment of the community. It works closely with Urban&Civic, Wintringham's master developer, to organise and fund many of our events, which are designed to bring us all together.

The WRA organises a range of events and activities throughout the year to give residents the opportunity to meet neighbours, make friends and enjoy being part of an active inclusive community.

SUNFLOWER COMPETITION

This year's events kicked off with our annual sunflower competition. Participating residents were given a competition kit and prizes were awarded for the biggest flower and the tallest plant.

Congratulations to this year's winners:

- Maddison - tallest plant
- Dilip and Priya - biggest flower

There were some fantastic blooms again this year. Well done all!



FEATHERED FRIENDS

In the summer we invited residents to come along for a hands-on experience, to get up close and personal with some fantastic owls from Owls and About. As well as watching a number of flying displays, residents were able to hold Pepper the barn owl and Biscuit the Indian eagle owl (above).

TRICK OR TREAT PUMPKIN TRAIL

In October we held our annual trick and treat pumpkin trail with record numbers of families taking part. There were some amazing costumes - from cute to creepy. Thank you to everybody that took part this year and helped make it such a great success.

DIWALI

On 2 November, residents from across Wintringham came together to celebrate Diwali, the festival of lights. We had performances from local dance groups, lots of crafting fun for the children, traditional sweets and lots of impromptu dancing. A great night was had by all.



GET INVOLVED

The WRA is always looking for new members to help support our community events. To express an interest in joining us, please e-mail info@ourwintringham.org.uk

FIND OUT MORE

Web: www.ourwintringham.org.uk
Facebook: Wintringham Community (UK)
WhatsApp: Join our development chats to connect on a more personal level using the link on our Facebook page.



Events and activities

SPORT/WELLNESS TASTER DAY

As part of the Active New Communities initiative, the Wintringham community enjoyed free activities, met local sports clubs and explored the leisure trail, stopping to try out the equipment at the fitness stations as part of a Sport & Wellbeing Taster Day in June.

The event, organised by Urban&Civic in partnership with Living Sport, took place on the school plaza, green spaces and leisure trail and was a great way to showcase some of the facilities onsite as well as local clubs and groups, and talk to the communities' team about future opportunities at Wintringham.

Free taster sessions in sports and activities included Tai Chi, mixed martial arts, bootcamp, tennis, pilates and music dance fitness. Football Fun Factory also provided a fantastic football experience with a giant inflatable for boys and girls of all ages and abilities.

Local clubs attending to showcase their sport and activities included St Neots Dragon Boat Club, St Neots Rowing Club, Eaton Socon Cricket Club and U3A; there was something to inspire all ages and abilities.



WINTRINGHAM ON WHEELS

In the summer, Wintringham hosted a family-friendly event with fun and interactive ways to experience the joys of cycling. As well as an opportunity to try out a wide variety of bicycles, visitors brought along their own bikes for safety checks and used pedal power to create bubbles and smoothies.

Christine Littlewood said: "Wintringham on Wheels aims to inspire residents and visitors to explore the area in a more sustainable and eco-friendly way. Cycling is not only a great way to reduce your carbon footprint, but it also offers numerous health benefits and is a wonderful way to connect with nature and the community."

SUMMER POP UP STREET FOOD

This year's Summer Street Food Saturday, organised in partnership with Off The Beaten Truck, proved popular with residents and the local community who came along to enjoy a fantastic evening of food and drink with friends, family and neighbours.

Food trucks included Pizza My Heart with wood-fired pizza and Pig-Casso with hickory smoked burgers, along with desserts from Churros Bar and Shelly's Vegan Bakes. It was also great to have Edmond's Box mobile bar back at Wintringham, serving a great selection of cocktails, craft beers, cider and soft drinks.





DRAGON BOAT RACE

For the third consecutive year, a crew from Urban&Civic's Cambridgeshire sites took to the River Great Ouse in August to compete in the popular St Neots Dragon Boat Race. Wintringham Wagtails successfully completed three heats before being knocked out in the semi-finals by half a second.

Urban&Civic was a gold sponsor for the charity event organised by St Neots Town Council, which attracts thousands of people to cheer on the Dragon Boat racers from the banks of the river and enjoy a family day out.

We're looking forward to sponsoring the event again next year!



HERITAGE DAY

Family, friends and neighbours joined residents to delve into St Neots' fascinating past at Wintringham's annual Heritage Day. As well as an opportunity to hear from archaeologists involved in excavations in Wintringham and the local area, visitors found out about life during the Iron Age and discovered hidden gems on display at St Neots Museum.

As well as exhibitions, displays and presentations, there was a range of interactive activities for children and budding archaeologists of all ages throughout the day, including crafting small woven bowls and decorating cardboard shields.

Christine Littlewood said: "Our Heritage Days are always popular and a great way to discover more about St Neots fascinating past. The archaeology experts and activities really help bring the past to life for all ages, so visitors can better understand how people lived and worked at Wintringham thousands of years ago, and how those discoveries are being reflected in the new community."



CHRISTMAS COMMUNITY EVENT

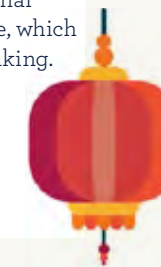
On 3 December, Wintringham celebrated Christmas in style with festive tunes from St Neots' Big Band as well as savoury dishes, sweet treats and hot and cold drinks from the food trucks and mobile bar.

It was a fantastic start to the festive season with friends, family and neighbours coming together to spread some Christmas cheer.



**SAVE THE DATE
LUNAR NEW YEAR**

Following the success of last year's event, Wintringham Residents' Association is organising a Lunar New Year celebration in the Main Hall of Wintringham Primary Academy from 4pm-7pm on Saturday, 1 February 2025. The event will include Chinese music and traditional craft activities to welcome in the Year of the Snake, which represents rebirth, personal growth and deep thinking.



Keep an eye on our website and social media for more information!



Food trucks on the Plaza

MID-WEEK TREATS

Hemingford Bakes will be serving freshly made hot drinks, homemade cakes and savoury snacks - with gluten free and vegan options available - from a converted horsebox on Wintringham Plaza from 8am to midday on Tuesdays, Wednesdays and Thursdays.

All coffee beans are sourced from local roasters, Old Spike, and if you prefer a plant-based milk with your coffee, even that is sourced from local producers at Glebe Farm.

Whether your usual is a flat white, cappuccino, espresso or a long black, be sure to stop by for your caffeine fix, and don't forget the homemade treats too!

FRIDAY EVENING FOOD TRUCKS

From 5-8pm each Friday we welcome a food truck with a range of culinary offerings for the community to enjoy each week. Pop-ups includes Nomadough with sour bread flat wraps, Kerief Catering with South African and Jamaican flavour fusions, Pizza My Heart's wood fired pizzeria, Hitwrap's Hong Kong street food and Pig-casso's hickory smoked meats to name but a few. Keep an eye on Off The Beaten Truck's social media for next week's food truck!



Hedgehog focus

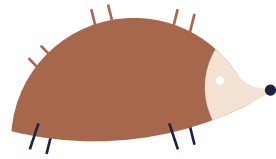
As well as all the ecological enhancements and habitats we are creating around Wintringham, back gardens provide a rich mosaic of environments that can help support local wildlife. This includes the humble hedgehog.

WILD WINTRINGHAM EVENT

In October, over 50 residents joined The Wildlife Trust Beds, Cambs and Northants (BCN) at Wintringham Primary Academy to find out more about how you can help hedgehogs in your garden during the autumn and winter, with some fun activities for all the family!

As well as planting up wildflower pots to take home and create a mini meadow in their garden, attendees learnt how to build hedgehog habitat piles and decorated hedgehog access holes. These are used to highlight the fence holes designed into the development to ensure animals can move across gardens to reach the development's wider green spaces.

The team from the Wildlife Trust also shared lots of interesting tips and answered questions about hedgehogs as well as other local wildlife and how to support them during the colder months.



Debbie McKenzie, Communities & Education Manager for The Wildlife Trust BCN, said: "We really enjoyed talking to Wintringham residents, and it was lovely to see couples and families keen to find out more about how they can help local wildlife in their gardens. The activities were well received, and it was a fantastic opportunity for our Youth Rangers to share their knowledge with such an enthusiastic and receptive audience."

As well as sharing lots of interesting tips to support hedgehogs and other local wildlife during the colder months, the team highlighted some of the activities at the Environmental Education Centre at Paxton Pits Nature Reserve, which offers fun and exciting practical nature-based activities as well as a chance to get close to local wildlife.



HOW YOU CAN HELP HEDGEHOGS

Hedgehogs usually hibernate between November and mid-March. They will wake up during milder spells for a snack so do continue to put food out for them.

If you spot a hedgehog out during the day it might be unwell and need a helping hand. An exception to this is nesting or feeding mothers who sometimes come out during the day to eat or gather nesting materials. If they are walking with purpose and not hanging about, they are often best left alone.

Top tips:

- 1 Make a 'Hedgehog Highway' in fences and gates so hedgehogs can travel between gardens.
- 2 Put out kitten kibble and water to support feed; nothing else as many other foods make them unwell.
- 3 Take up football nets and other netting when not in use as hedgehogs get tangled up in them.
- 4 Check your garden thoroughly before mowing and strimming.
- 5 Ensure ponds have a means of escape such as a ramp or a 'beached' end.

If you have concerns about a hedgehog, contact the British Hedgehog Preservation Society on 01584 890801 or visit www.britishhedgehogs.org.uk for advice.

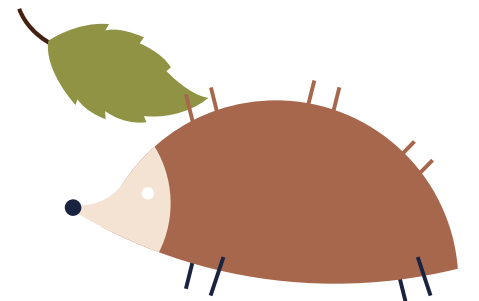
Did you know:

- Baby hedgehogs are called hoglets.
- Hedgehogs have over 5,000 spikes.
- A group of hedgehogs is called an array - although they are solitary creatures, and it is rare to find them grouped together.
- Hedgehogs are lactose intolerant (so please put out water, not milk).
- There are 14 different species of hedgehog in the world. The European Hedgehog is the only species native to the UK.

Residents moving into Wintringham are given a Welcome Pack, which includes a nature booklet created in collaboration with the Wildlife Trust to help create wildlife-friendly gardens that support a range of species including the hedgehog.

If you would like to learn more about hedgehogs and what you can do to support them through the colder months, the Wildlife Trust's Wild About Gardens booklet, provides lots of information and ideas:

www.wildaboutgardens.org.uk



Introducing smart journeys

Wintringham has been designed to encourage a healthy, sustainable lifestyle with the right infrastructure and services being put in place for people to lead low carbon lives as the development rolls out.

Urban&Civic recently appointed *smart journeys*, the Sustainable Travel Planning Team hosted by Cambridgeshire County Council, to support residents to choose cycling, walking and buses, over their car, improving their health and decreasing their carbon footprint.

smart journeys will support residents with a range of sustainable travel options – including walking, cycling, car sharing and making effective use of the local bus services. Initiatives planned include bike servicing, 1-2-1 cycle confidence training and a number of sustainable transport events to share new incentives and hear resident feedback about what is currently on offer and what can be improved.

Each year, *smart journeys* will carry out a Travel Survey to help plan, monitor and evaluate the impact and effectiveness of these initiatives to enable behavioural change. The results of the survey and travel patterns of the Wintringham community will be shared with Urban&Civic and local authority partners to evolve the future transport strategy, interventions and incentives.

Marianne Spilling from *smart journeys* said: “Our team is passionate about engagement and believes that behavioural change on how people move about starts with building strong relationships and working with communities to tailor our approach to offer unique, bespoke travel plan services that respond to local needs.

“We look forward to implementing personalised travel planning that enables Wintringham residents to consider their travel habits and choices, as well as the impact this has on their surroundings; encouraging them to explore more sustainable travel options for work and leisure.”



Meet LocalGO's 100th member, Phil!

LOCALGO

Urban&Civic will continue to operate the free LocalGO membership for residents, which supports initiatives and incentives to help residents get about sustainably and healthily.

Christine Littlewood said: “We’ve got some great travel champions already signed up to the wide variety of discounts, travel offers and incentives that LocalGO offers. Let’s keep the momentum going! By signing up you can get updates on rail, bus and cycle offers and discounts to help you get about more cheaply and sustainably.”

Below are just some of the incentives on offer for Wintringham residents.

RESIDENTS CAN ACCESS THE FOLLOWING OFFERS:

- **£50 CYCLE VOUCHER**

Access a free £50 cycle voucher per household to spend at either Rutland Cycling, Broken Spoke Cycles or Wheeler’s Cycles stores.

- **£5 OFF MONTHLY EBIKE COSTS**

Save £5 on monthly subscription costs with Hurricane eBikes.

- **10% OFF HIRE AND SERVICING**

LocalGO members can save 10% on hire and bike servicing with Rutland Cycling.

- **8% OFF**

Enjoy 8% of various cycling items with Halfords.

Create your **FREE** account and access the above offers at <https://localgo.co.uk/wintringham/>

Your scheme password is: **Wintringham@localgo.co.uk**

Need help? Email: info@localgo.co.uk

CAMBRIDGE ROAD UPDATE

The work to upgrade Cambridge Road from the A428 roundabout towards St Neots has now been completed providing a new gateway to the town, as well as better walking, cycling and bus connections for existing and new residents at Wintringham, Love’s Farm and the next phase of Love’s Farm.

The upgrades include a roundabout at the Pelham Road junction (to replace the existing T-junction), three new junctions to serve the future development to the north of Cambridge Road, new cycle paths, bus stops/shelters and pedestrian crossing points. The new design provides a safer route for all users and has enabled a 30mph speed limit to be introduced along the road.

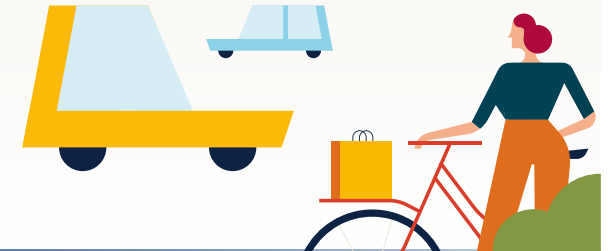
Rebecca Britton, Regional Director at Urban&Civic, said: “This has been a major programme of works to provide the utilities and infrastructure needed for future phases of development across both sides of Cambridge Road. The works also provide greater opportunities for active travel with cycling and walking for existing and new residents, as well as more access to bus stops and services.

“We know that the scale of the works has caused disruption locally, and we again apologise for that, but pulling everything together into one programme across the two developments has meant we have been able to keep the road open for all but the last week when the final connections were made. It should mean that we do not have to do such major works again.

“We’d like to thank everyone for their patience and hope the upgrades have improved the experience of all users along this stretch of Cambridge Road.”

URBAN&CIVIC ACQUIRE L&Q ESTATES

Since agreeing a joint approach to these works, Urban&Civic has acquired the company bringing forward the development to the north of Cambridge Road – L&Q Estates. In our next edition, we’ll provide some information on the plans that the joint team are now delivering, so Wintringham residents know what’s happening across the road from them.



Investing in St Neots Town Centre

Town and District Councillor Ben Pitt provides an update on the ongoing efforts to transform St Neots town centre.

This is an exciting time for St Neots. It is growing fast, with people making their homes in Wintringham, and soon, across the road in the next phase of development too. That means more people to support local businesses, and more money for local councils to invest in infrastructure and services.

There are certain things that new communities must have including roads, schools and health facilities. These are mandated in contracts between the housing developer and the District Council. But there are other types of infrastructure that I believe are just as important. They're the public spaces and buildings where people can meet each other, find common interests, discover new ones, forge friendships, support each other and have fun.

Urban&Civic has designed some wonderful pocket parks and walking routes around Wintringham and will also be providing other community facilities as the development grows. Meanwhile, the Town and District Councils have a role (and funding) to ensure the town as a whole has the right facilities for the growing population.

St Neots town centre is undergoing a £15.1 million investment across four projects – the Priory Centre, the High Street, the Market Square and the Old Falcon Hotel.

The High Street and Market Square improvements are well underway. The objective is to prioritise pedestrians over cars, smarten up the town centre and establish the Market Square as the civic and cultural heart of the town. We already have some great events on the Square including markets, Neotists' Arts on the Square programme, Christmas activities and the Living History Festival.

The refurbished Market Square will give more space and prominence for these kinds of events. My ambition is to get to a position where you can pop into town at the weekend and be confident that there will be something interesting happening there.

The Old Falcon Hotel overlooks the Market Square but it has been boarded up for the best part of 20 years. It's in

private ownership, but the District Council is working with the owner to bring it back into use, with retail units on the ground floor and flats above and behind.

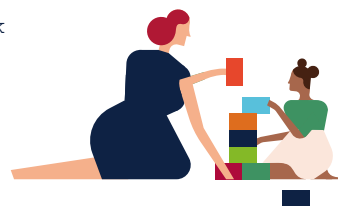
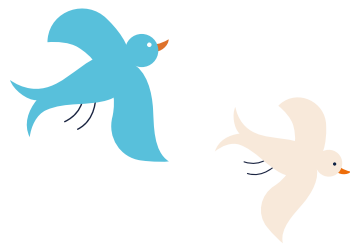
The Priory Centre refurbishment has similar aspirations. It already has lots of different uses including theatre shows, concerts, weddings, parties, conferences, beer festivals, exercise classes and community activities. However, it's looking a bit shabby, and it doesn't make the most of its riverside location. It's now closed for refurbishment, and the new plans will transform it into a high-spec venue and event space with commanding views of the river. Meanwhile, the management team is developing plans to market it as a destination venue rather than simply a hall for hire.

And that's not all. The District and Town Councils are delivering various additional projects in St Neots: a public art commission, digital information screens, a performance stage for the Market Square, refurbished skate ramps and toilets in Riverside Park (including an accessible Changing Places Toilet), with more in the pipeline.

The Council can't control which businesses choose to set up shop in the town centre, but St Neots is already doing well for independent retail, food and drink establishments. It was great to read that the owners of the fantastic new Escape Room just off the Market Square (www.theescapehouse.co.uk) chose St Neots because they could see the investment already going into the town.

With a common vision across the public, private and community sectors, focused on quality experiences, human connection and having fun, it really does feel like St Neots is enjoying a new lease of life.

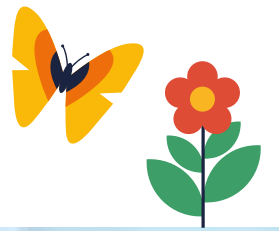
Ben Pitt
ben.pitt@stneots-tc.gov.uk



Top: The Market Square hosts a range of community events, such as Neotists' Arts on the Square programme.

Above: The refurbished Market Square includes new trees, seats and planters.

Right: The refurbished Priory Centre will have a bigger focus on theatre and live music.



Key Contacts

General maintenance

Including: grass cutting; clearing drains; gritting roads in Winter; repairing street lighting; trimming hedges; and ensuring play area safety.

Managed by Encore Estate Management
01223 866980
info@encoreestates.co.uk

Housebuilders

Please contact your house builder with any queries about the new homes you have moved into, including outside lighting, electricity, water and network connections.

Housing associations

If you have any queries about your home, please contact your housing association representative.

Hopefully you have had a chance to look through the *Welcome Pack* you received, and this should have a wealth of information about local facilities and amenities. Below is a handy summary of the key contacts you might find useful:

Wintringham community development and events

Including: community events; activities, facilities and new resident information.

Christine Littlewood,
Community Development Lead
Christine.littlewood@urbanandcivic.com
07384 816725

Employment and training

Support with recruitment, employment and training opportunities in the local area.

Local government

Information about your local elected representatives can be found at:

www.cambridgeshire.gov.uk
(St Neots and Gransden division)

www.huntingdonshire.gov.uk
(St Neots East ward)

www.stneots-tc.gov.uk
(St Neots East ward)

Health

Lakeside St Neots provides GP services for 24,000 patients in and around St Neots. Please contact Reception to register as a new patient. If you have moved locally and are already registered at the practice, please remember to update your new address. If you are looking to register we urge all residents to do so in good time, as it can take some time to update and transfer medical records, and it is better to have this sorted out before you need to see a doctor.

T 01480 406677
lakeside.stneots@nhs.net

Please also refer to your *Resident Welcome Pack* for further information and contact details on local hospitals, dentists and healthcare providers, and a range of other facilities and services.

Wishing you a
merry Christmas and
a happy New Year



St Neots Food Bank

If you are able to help this year, the Food Bank is in need of a range of everyday items such as longlife fruit juice, longlife milk, teabags (80), tinned meat and tinned fruit.

You can drop off your donations at a number of locations in St Neots. For more information, visit:
<https://stneots.foodbank.org.uk/give-help/donate-food/>

WINTRINGHAM
ST NEOTS